



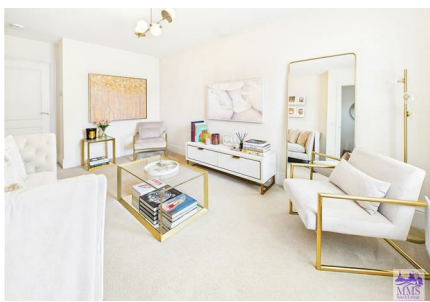
48 Mason Avenue

Weldon Ebbsfleet Valley DA10 1DT

Offers Over £400,000



Nestled in the desirable Ebbsfleet Valley, this stunning mid-terrace house on Mason Avenue offers a perfect blend of modern living and stylish decor. Built in 2019, this new build property spans an impressive 753 square feet and boasts a welcoming entrance that leads to a convenient cloakroom. The bright and airy lounge provides a comfortable space for relaxation, while the contemporary kitchen/diner stretches across the width of the house, overlooking the charming rear garden. This outdoor area serves as an ideal extension of the home, perfect for social gatherings and enjoying the fresh air. On the first floor, you will find two generously sized double bedrooms, each featuring its own ensuite bathroom, ensuring privacy and convenience for all residents. The property also includes parking for two vehicles, a valuable asset in this sought-after location. Ebbsfleet is a modern village that benefits from excellent transport links, with the new Ebbsfleet station nearby offering high-speed train services. This makes it an ideal choice for commuters seeking a balance between suburban tranquillity and easy access to the city. The property falls under council tax band D and comes with an NHBC warranty, providing peace of mind for potential buyers. This delightful home is perfect for those looking to embrace a contemporary lifestyle in a vibrant community. Don't miss the opportunity to make this beautiful property your own. £200per year management fees



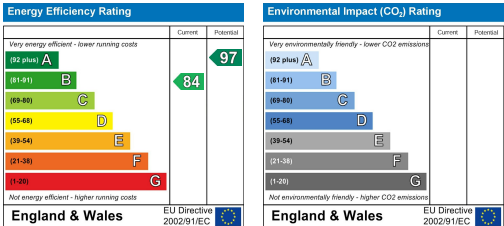
Area Map



Floor Plans



Energy Efficiency Graph



These particulars, whilst believed to be accurate are set out as a general outline only for guidance and do not constitute any part of an offer or contract. Intending purchasers should not rely on them as statements of representation of fact, but must satisfy themselves by inspection or otherwise as to their accuracy. No person in this firms employment has the authority to make or give any representation or warranty in respect of the property.